



MONTHLY MEMBERSHIP PROGRESS REPORT

District 3231A2

Results as of: 04/30/2018

GMT: JAYESH THAKKAR

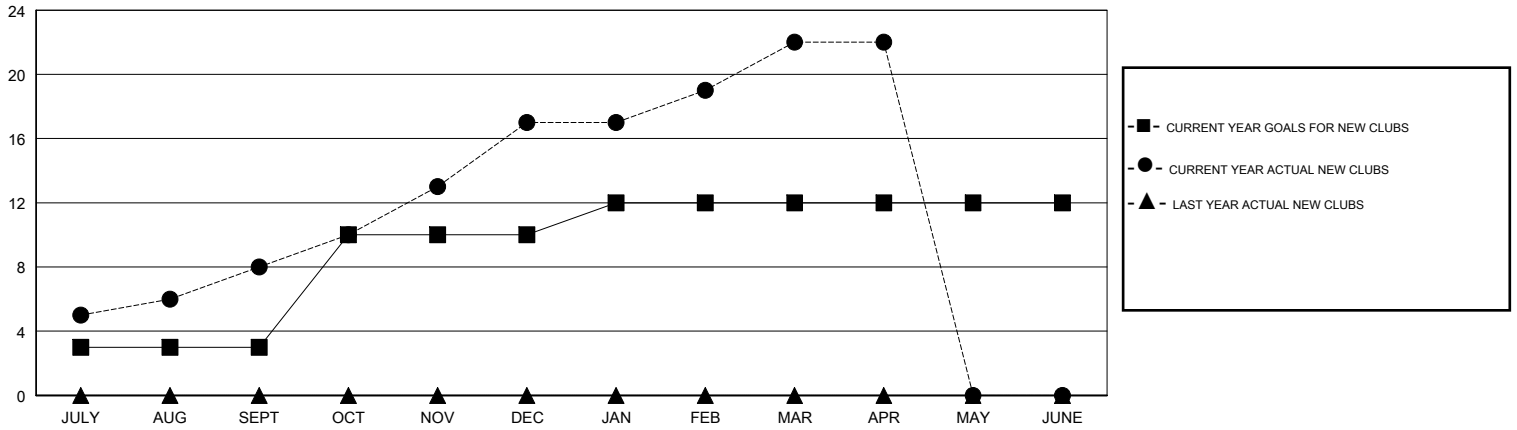
LOCATION INDIA

GMT CA

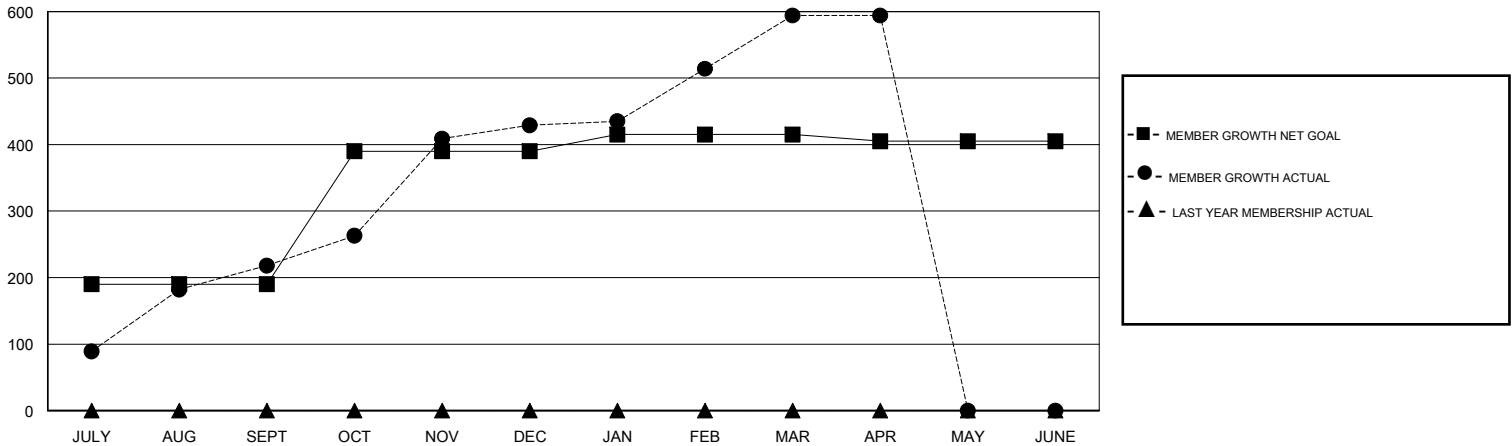
Clubs			
RESULTS FOR 2017-2018			
QUARTER	NEW CLUB GOAL	NEW CLUBS	DROPPED CLUBS
JULY/AUG/SEPT	3	8	0
OCT/NOV/DEC	7	9	2
JAN/FEB/MAR	2	5	0
APR/MAY/JUNE	0	0	0

Members			
RESULTS FOR 2017-2018			
QUARTER	MEMBER GROWTH NET GOAL	MEMBER GROWTH ACTUAL	DROPPED MEMBERS ACTUAL (including transfers)
JULY/AUG/SEPT	190	444	214
OCT/NOV/DEC	200	341	118
JAN/FEB/MAR	25	222	52
APR/MAY/JUNE	-10	38	37

GOALS AND ACTUAL NEW CLUBS CUMULATIVE



GOALS AND ACTUAL MEMBERS CUMULATIVE



DROPPED CLUBS: 2	81 CLUBS OF 111 ADDED 1 OR MORE NEW MEMBERS	<u>GENDER DISTRIBUTION</u>	
DROPPED MEMBERS		MALE	2,739 (65.75%)
DECEASED	10	FEMALE	1,427 (34.25%)
CLUB CANCELLED	17	Women Percentage Fiscal Year Goal: 35%	
OTHER	394	TOTAL FAMILY UNIT MEMBERS	1,714
TOTAL	421	FAMILY MEMBERS PAYING HALF DUES	897

[CLICK HERE FOR CUMULATIVE MEMBERSHIP DATA](#)